

Charcter Design 1

Type - Space Trooper "Full Body Armor"
Side - "Allied" Human

Astronaut looking need
a little more high tech

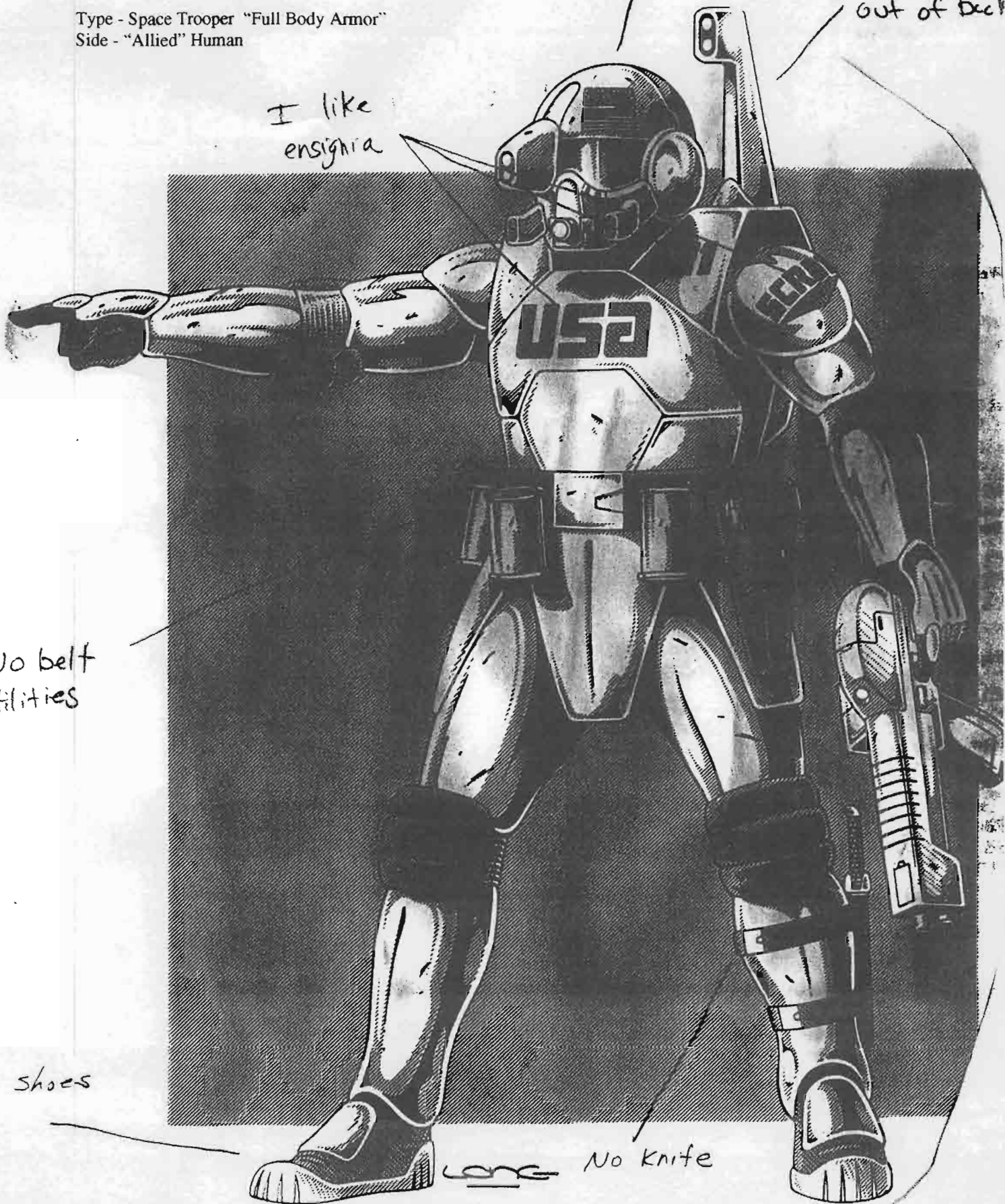
I like
sensor, commi
out of back

I like
ensignia

No belt
utilities

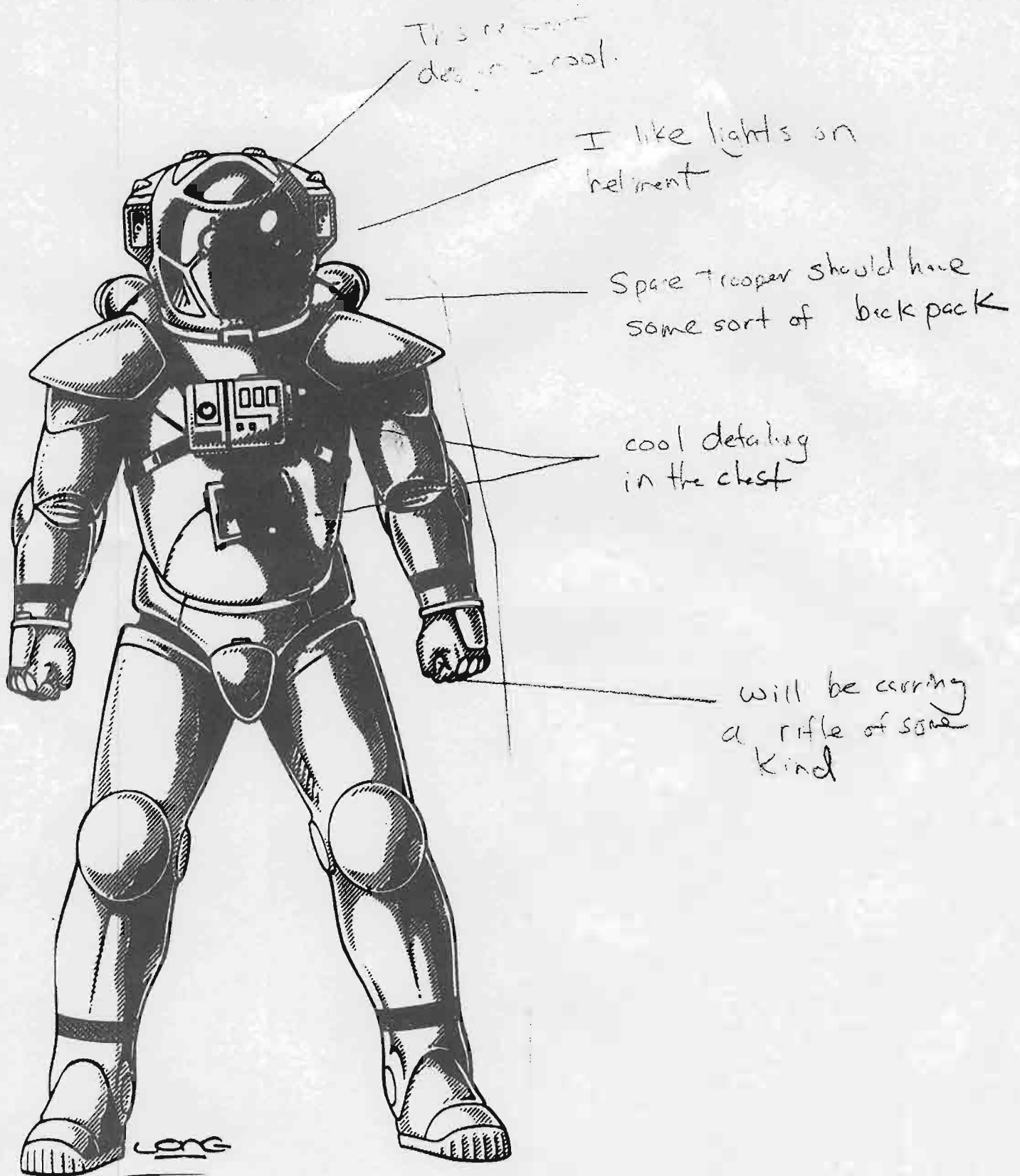
Space shoes

No knife



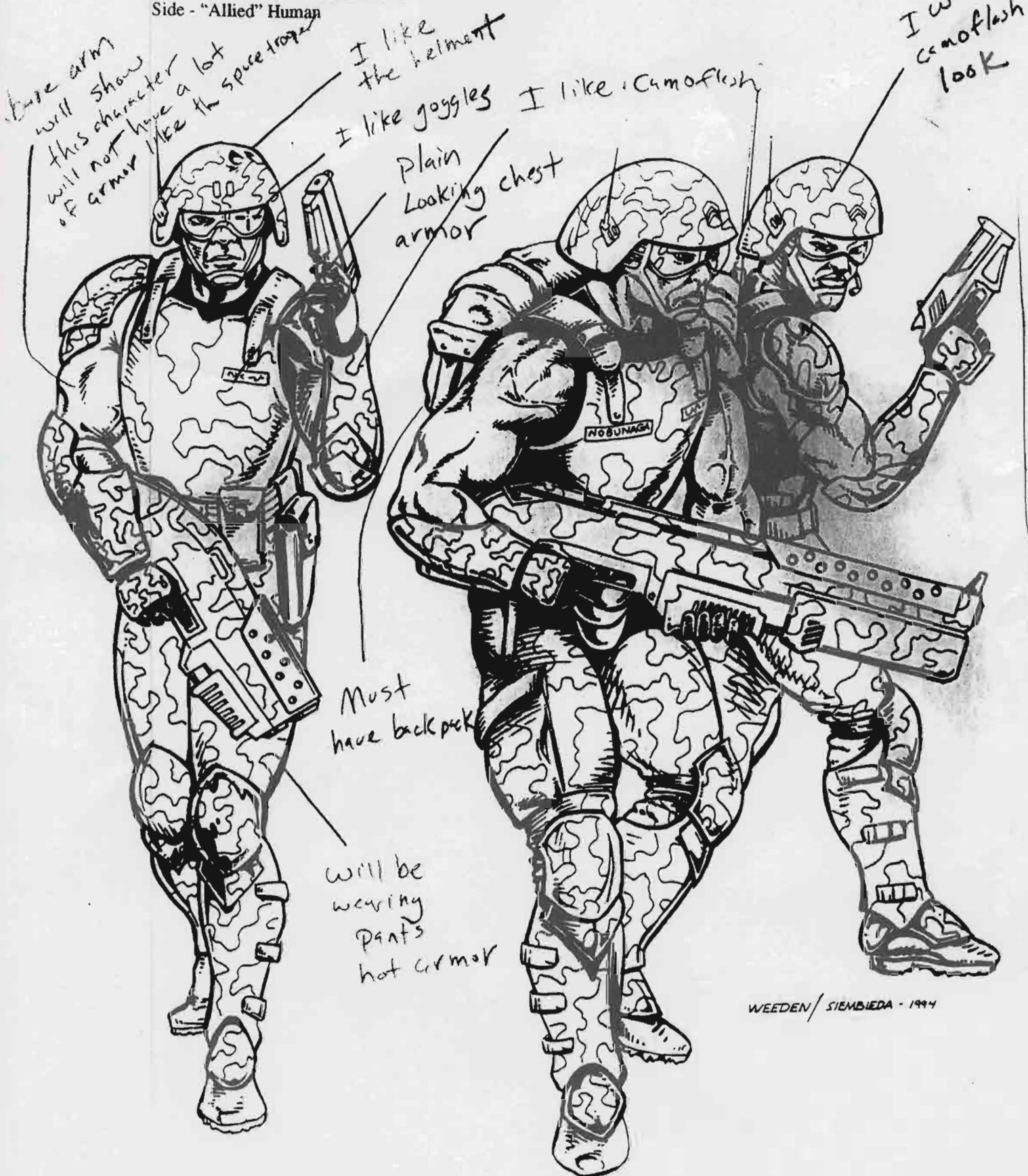
Character Design 1

Type - Space Trooper "Full Body Armor"
Side - "Allied" Human



Character Design 2

Type - Mercenary "Medium Body Armor"
Side - "Allied" Human



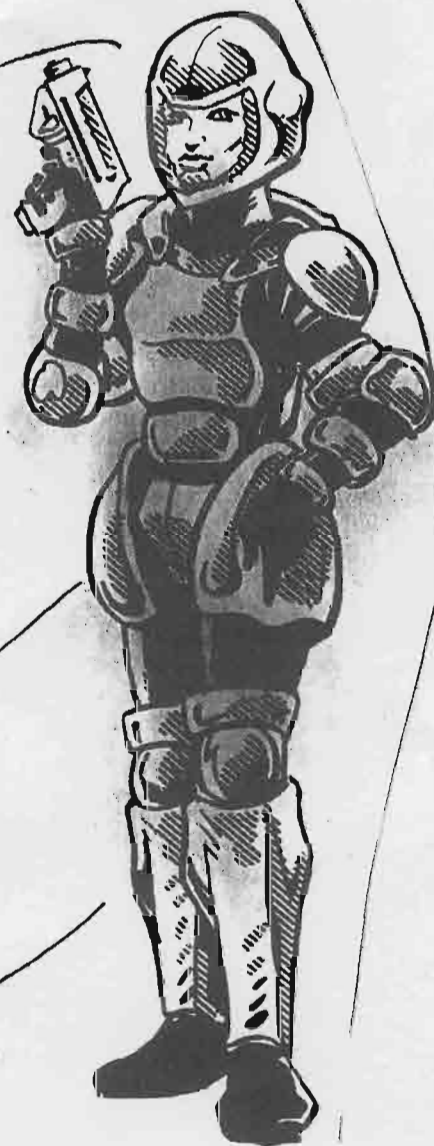
WEEDEN / SIEMBIEDA - 1994

Character Design 3

Type - Female Military Specialist "Light Body Armor"
Side - "Allied" Human



I like this
look do something
similar to it



No
helmet

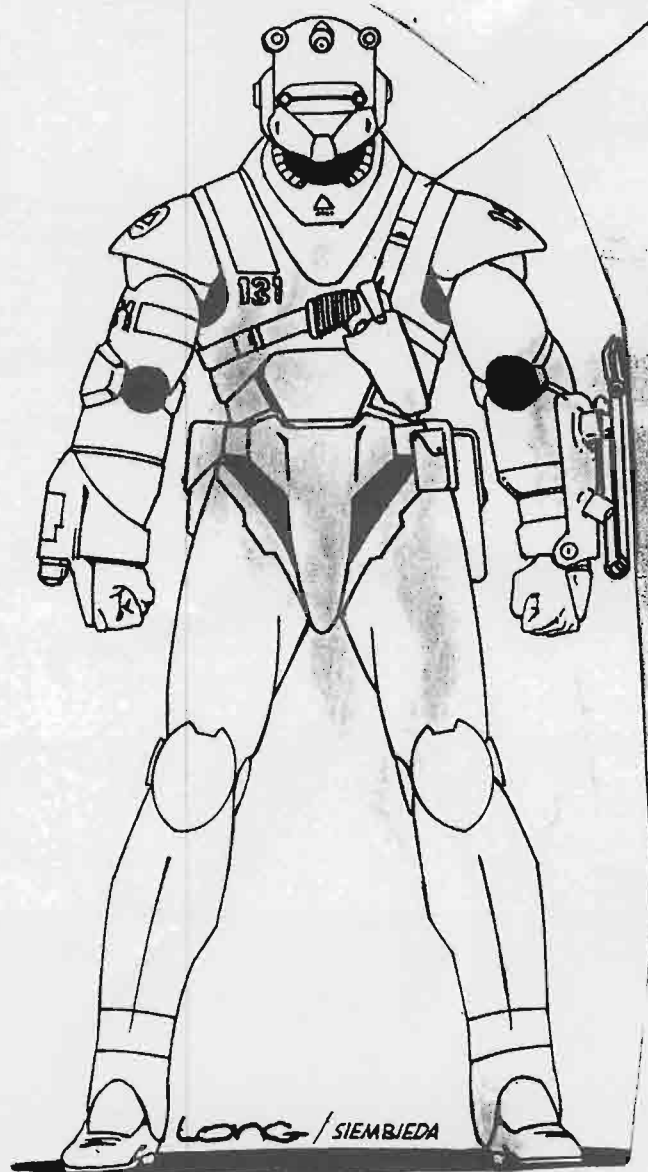
armor is
to hippy

I like
leg armor

Character Design 4

Type - Space Marine "Full Body Armor"

Side - "Allied" Human

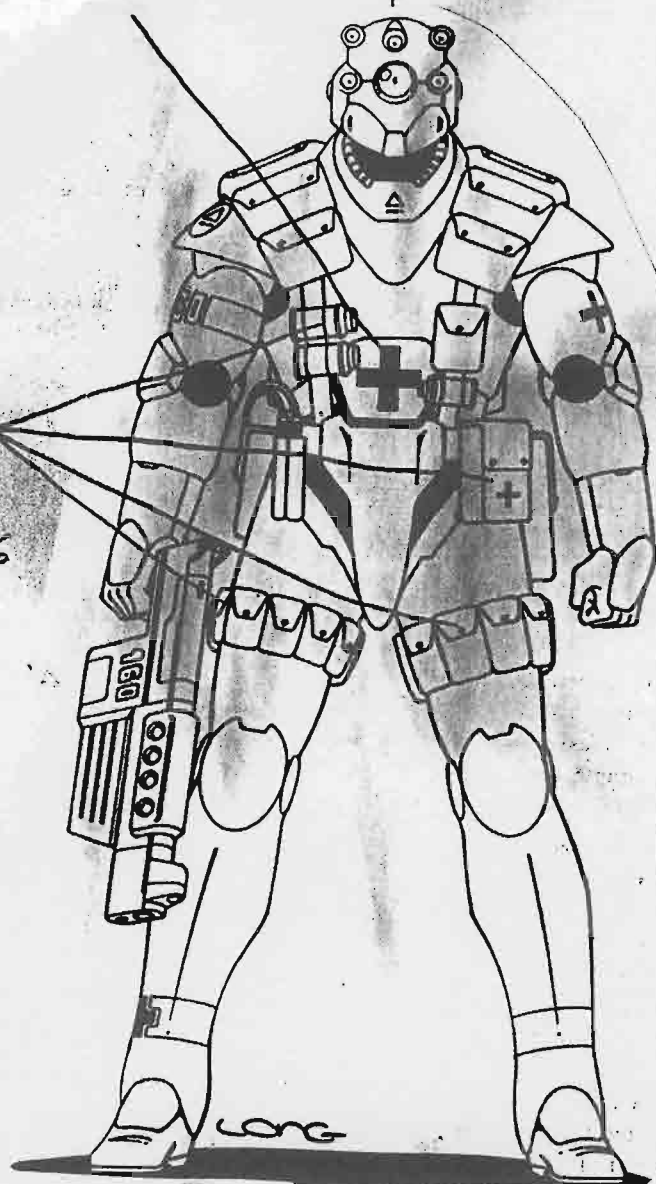


I like
weapon
holster

no cross

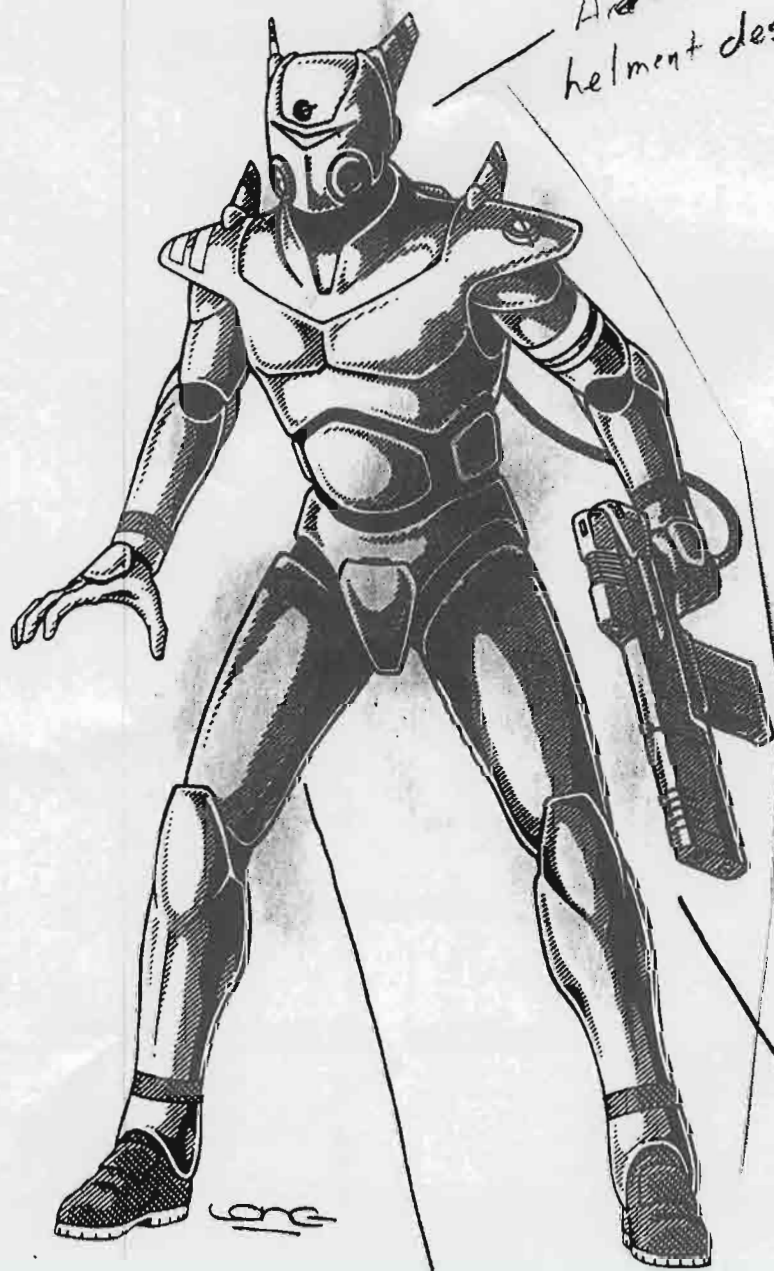
I like helmet

I like
body
armor
accessories

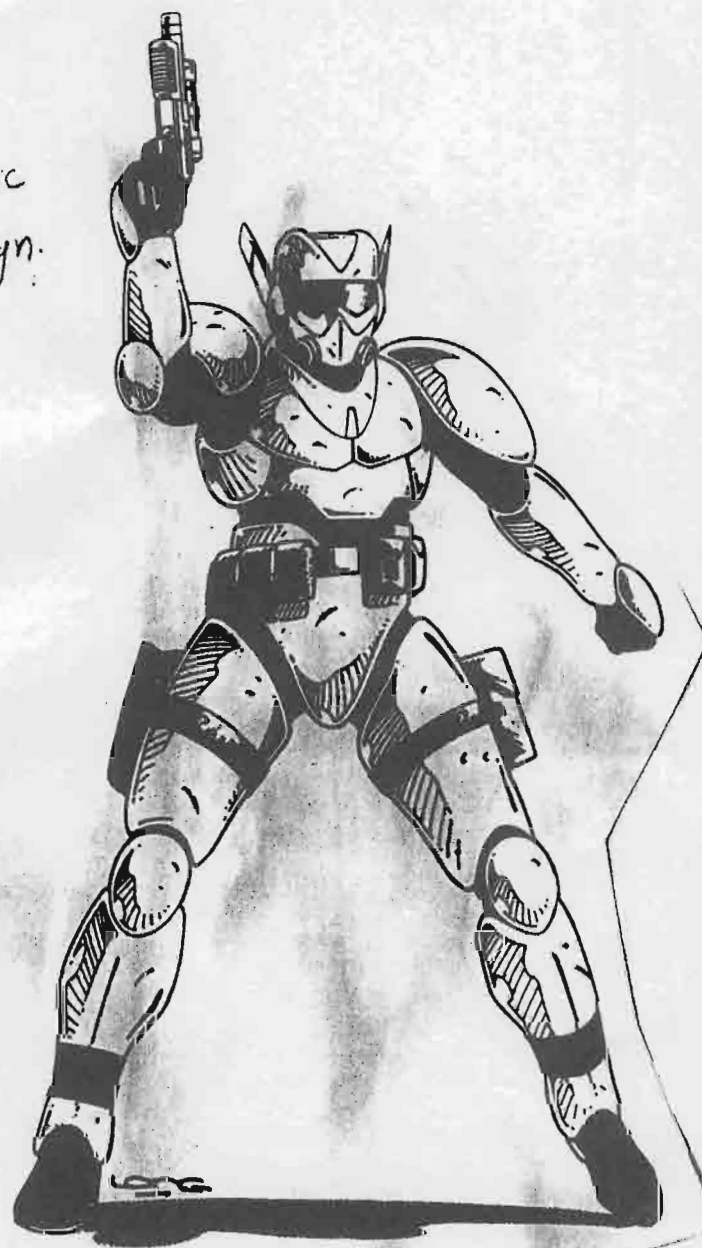


Character Design 4

Type - Space Marine "Full Body Armor"
Side - "Allied" Human



Futuristic
body armor design



Rifle should be attached
to the backpack by a
hose.

Character Design 4

Type - Space Marine "Full Body Armor"
Side - "Allied" Human

No shoulder
mounted missile
launchers

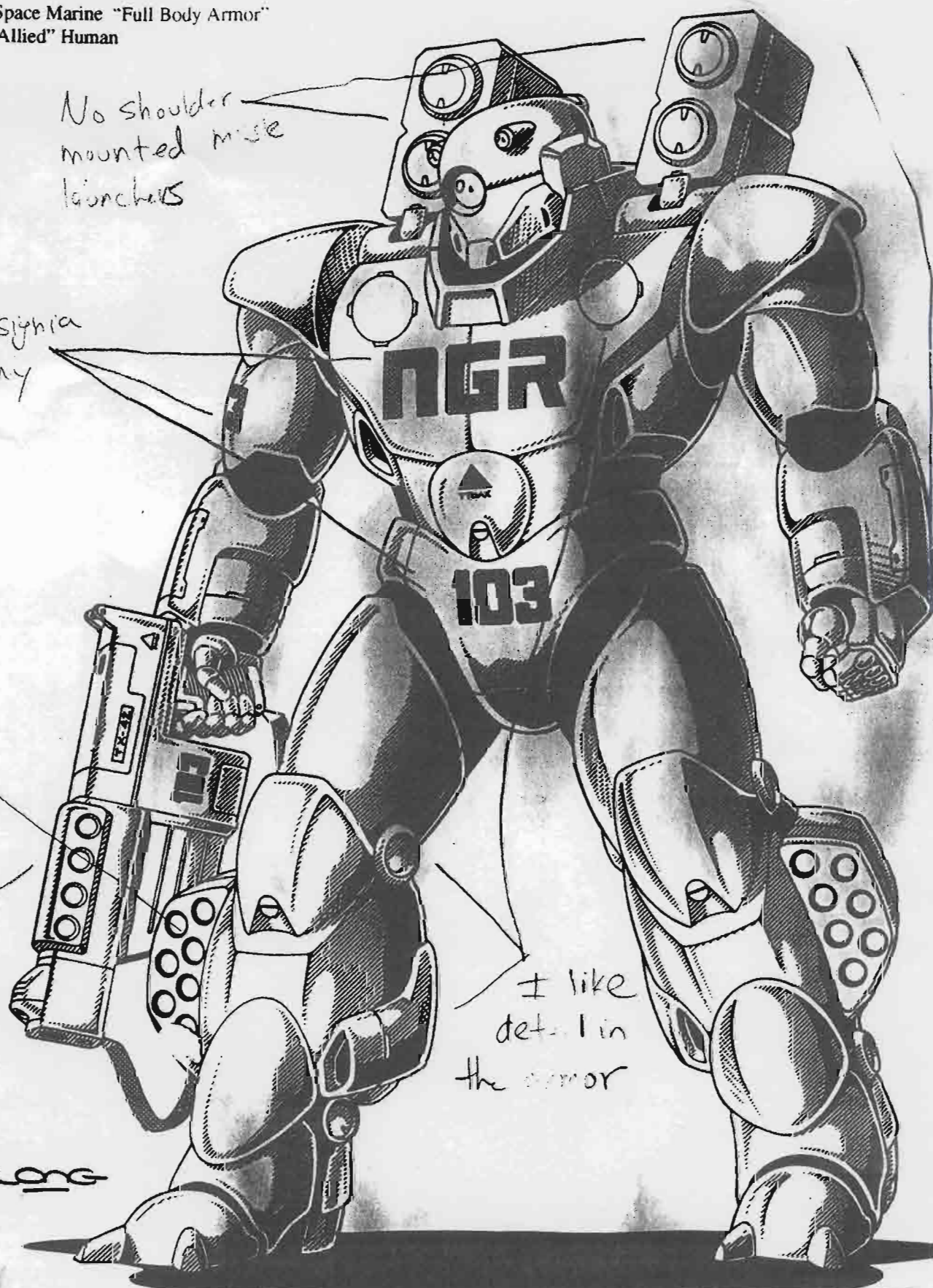
I like ensignia
don't put any
numbers

No leg
missile

I like
rough
heavy rifle

I like
detail in
the armor

long

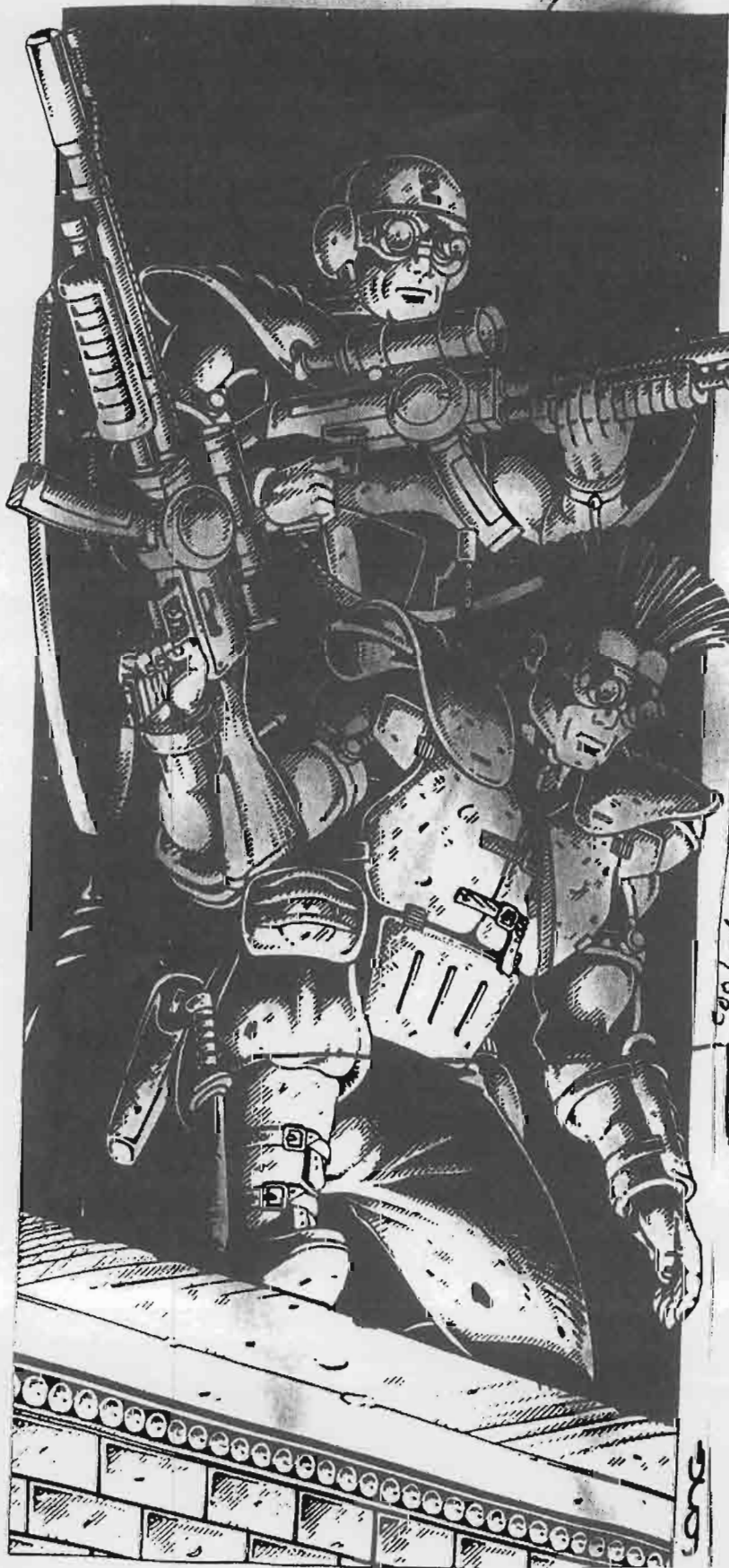


will be
hold my weapon
rifle type

No helmet

Character Design 5

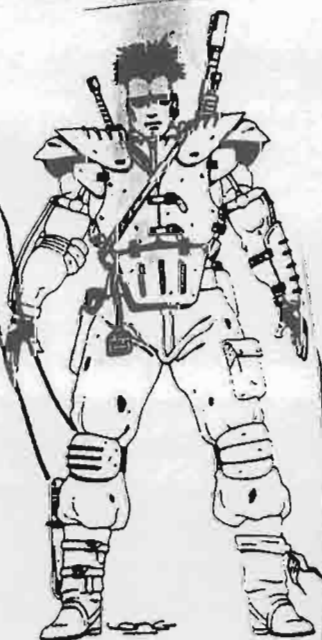
Type - Freedom Fighter "Medium body armor"
Side - "Allied" Human



Should wear
some
type of
glasses

I like this
type of detail

I like
these looks
punk rock with
light body
armor

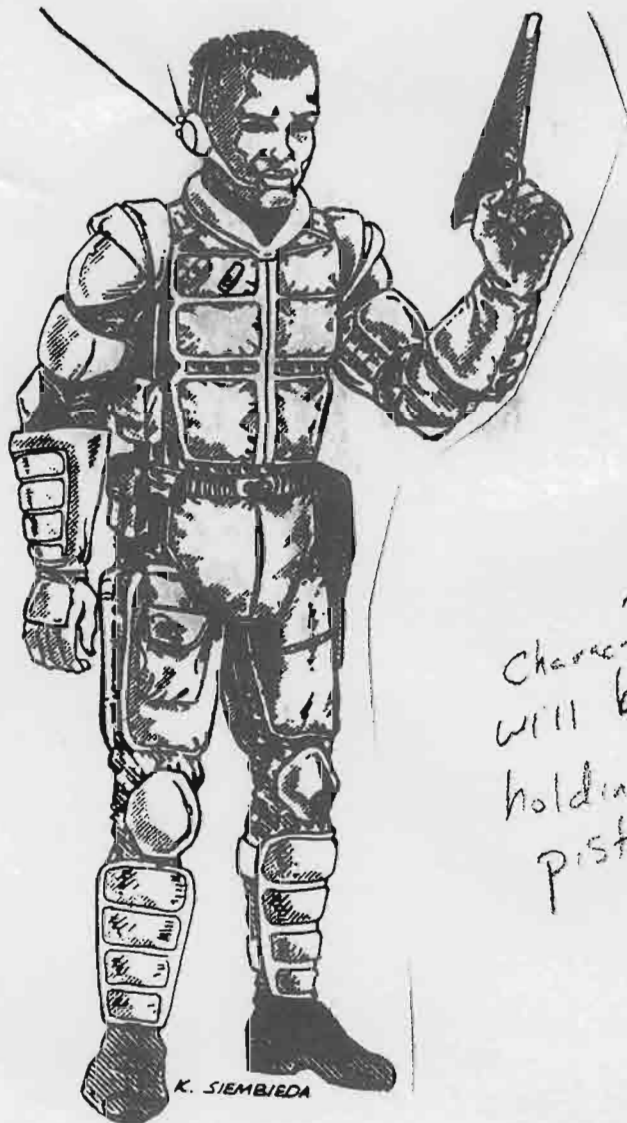


Character Design 6

Type - Field Scout "No Body Armor"
Side - "Allied" Human

I like head
part

this look
is good
Same camo flash
look as Mercenary



Character
will be
holding
pistol

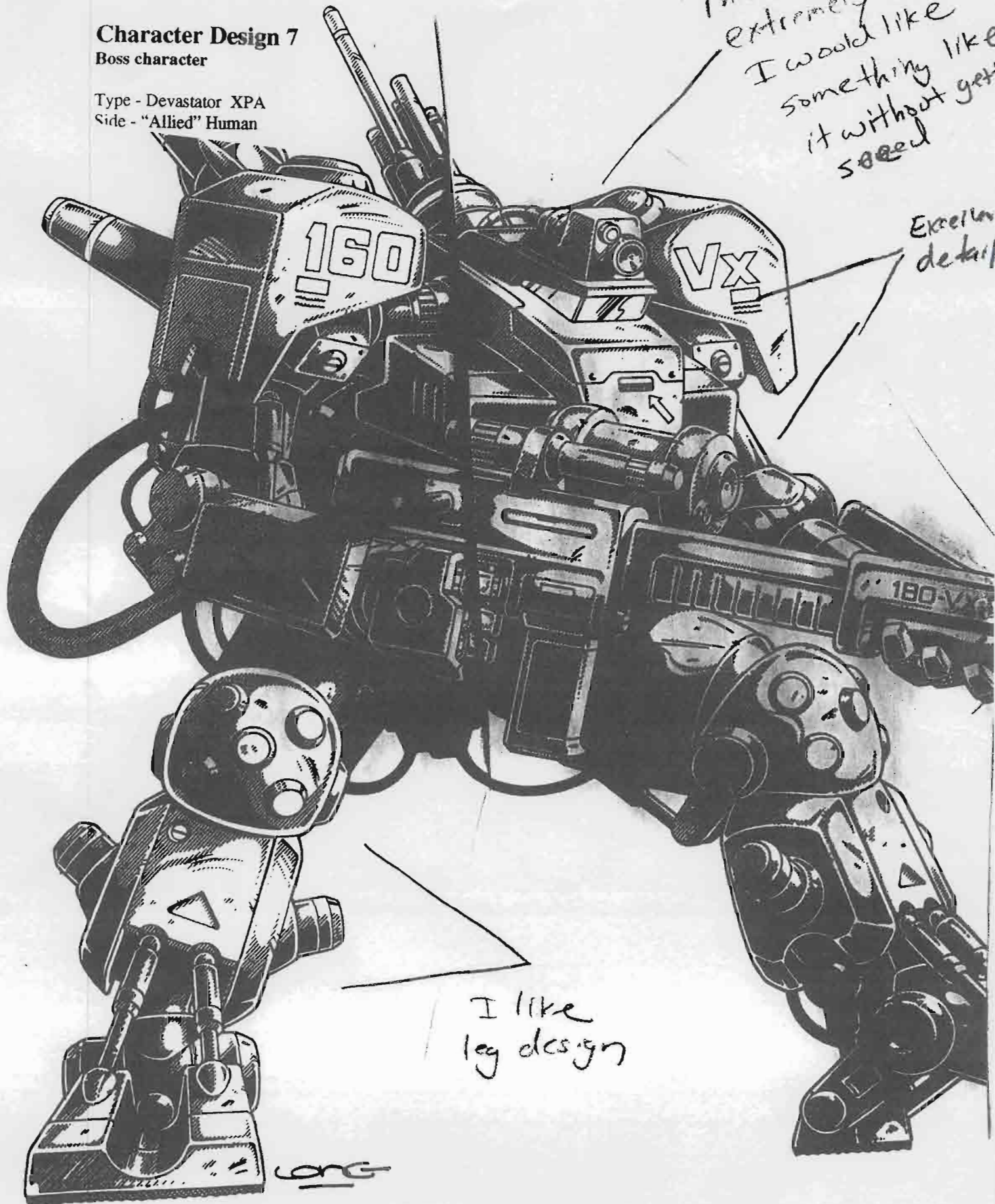


Character Design 7
Boss character

Type - Devastator XPA
Side - "Allied" Human

This design is
extremely cool
I would like
something like
it without get-
ting so ~~so~~

Excellent
detail



I like
leg design

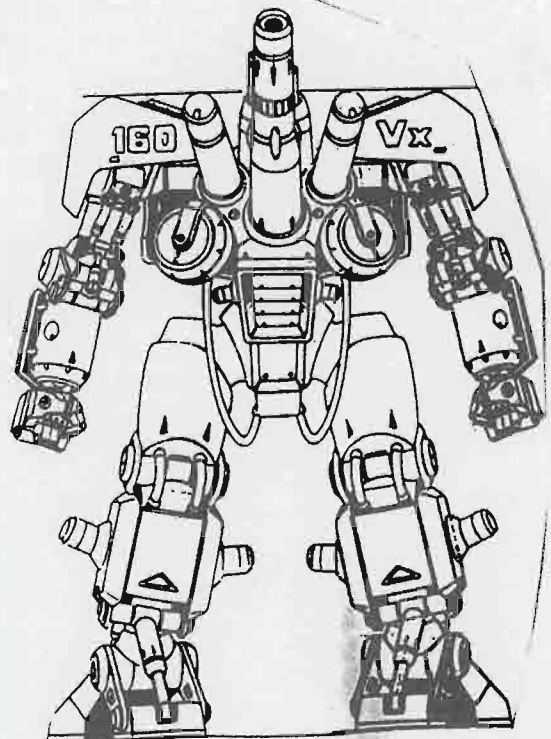
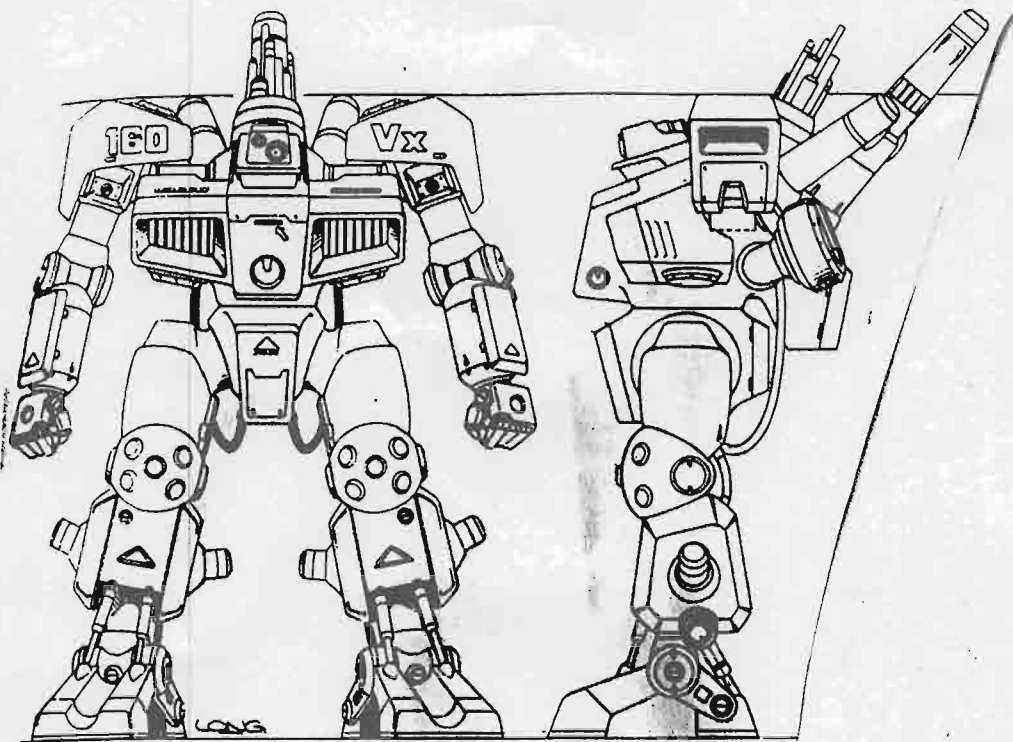
long

Character Design 7

Boss character

Type - Devastator XPA

Side - "Allied" Human



Character Design 8

Boss character

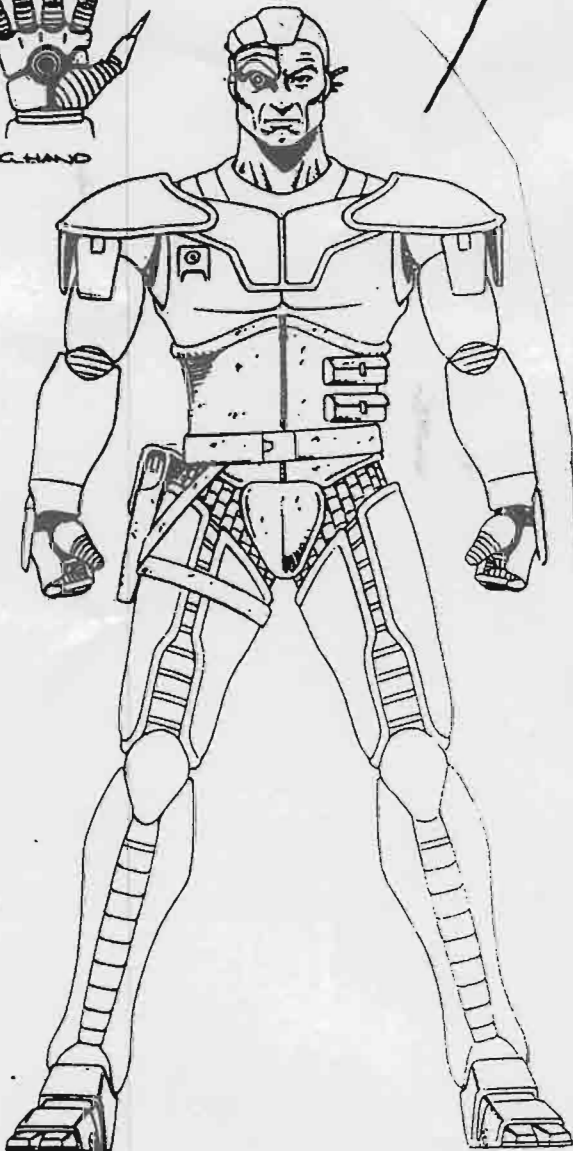
Type - Cyborg

Side - "Allied" Human

I really like this
design do something
similar without putting my ass in jail



BORG HAND



© 1990 SIEMBIEDA

Character Design 9

Boss character

Type - Assault Robot
Side - "Allied" Human

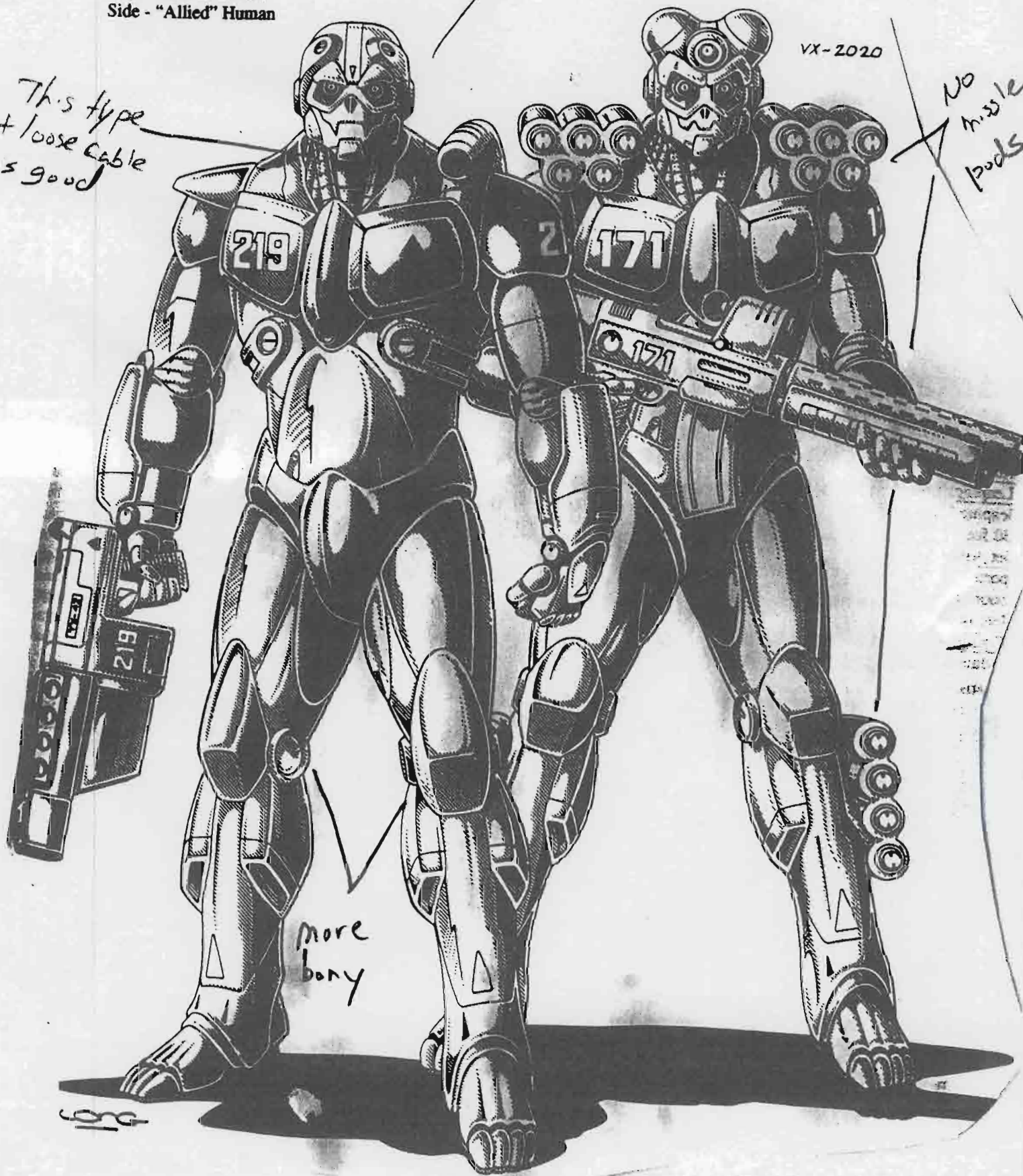
I like design
but I want it more
like a terminator Robot

This type
of loose cable
is good

VX-2020

No
missile
pods

more
bony



Character Design 9

Boss character

Type - Assault Robot

Side - "Allied" Human

I like back detail

